



NetWare Mobile: Product Details

NetWare Mobile is a client software package that provides mobile networking and remote access for PCs running Windows 3.1 or above. NetWare Mobile provides you with the same familiar interface whether you are directly connected to the network, remotely connected to the network through a dial-up connection, or working offline. It enables you to take network data on a Windows-based PC and use it offline. All changes made to the data are tracked and then updated when you reconnect to the network.

NetWare Mobile includes a sophisticated dialer that simplifies dial-in connections to NetWare® networks from anywhere in the world. It also provides powerful graphical administration tools that let network supervisors configure remote access, manage mobile users and data, and maintain NetWare security.

Features

- Provides a consistent network interface whether you are working online or offline
- Includes Mobile File Assistant to enable you to take network data, work offline, and synchronize files when you reconnect to the network
- Simplifies dial-up connections with sophisticated location management
- Provides information for dial-in services through the NetWare Mobile™ Phone Book and a calling card database
- Provides powerful management tools
- Provides security for mobile data by login and password authentication and optional data encryption

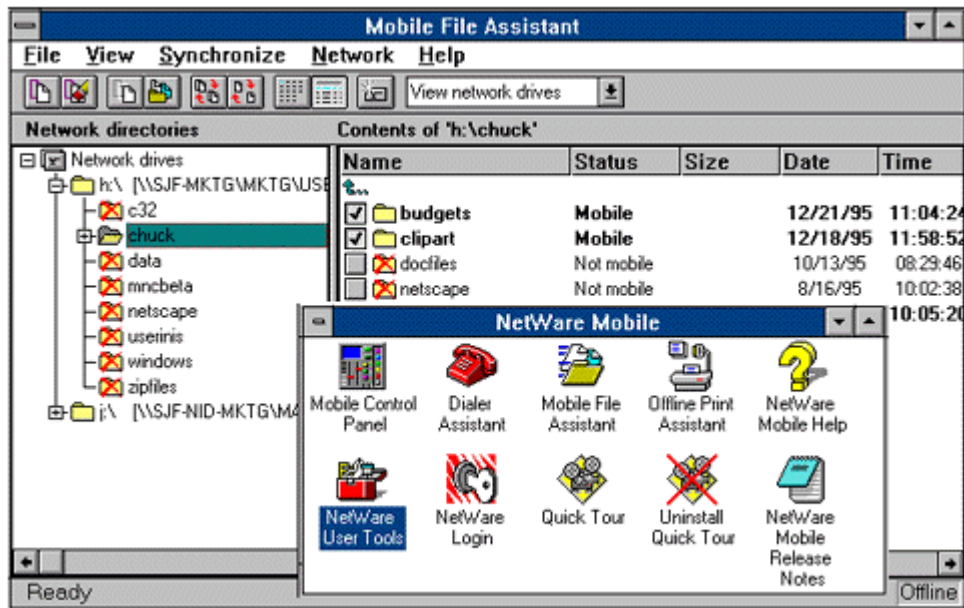
Consistent Network Interface

NetWare Mobile offers the same user interface whether you are directly connected to the network, remotely connected to the network, or working offline. By offering a consistent interface, NetWare Mobile enables you to work with network data in your accustomed environment. It's like having the network on your computer no matter where you are—at a remote office, on a plane, or in a hotel.

Mobile File Assistant

Mobile File Assistant provides an intuitive user interface that enables you to browse the network and select files, applications, and directories to use offline. You can replicate the files and then disconnect from the network, working offline to save on connection time. All changes made to the files are tracked while you work offline. Mobile File Assistant then synchronizes mobile files with files on the network when you reconnect, thereby keeping your data consistent and up-to-date. Connection time is further saved because only those parts of the files you have changed are sent to the network.

Figure 1: The Mobile File Assistant in NetWare Mobile enables users to work with network data offline, then synchronize changes when they reconnect to the network.



Sophisticated Location Management

NetWare Mobile makes it easy to connect to your network from any location by maintaining location-specific information in location profiles. For each physical location or networking environment, you can define properties, such as login preferences, connection media protocols, communication devices, drivers, remote access points, and dialing conventions, through an interactive graphical utility. These profiles are then saved for future use so that you can simply choose the named location and you will be automatically connected.

For example, a user might work at home and at two different company locations. With NetWare Mobile, the user can create a location profile for each site containing all the information needed to connect to the network from that location. Then, when the user wants to connect, he or she needs only to select the named location to automatically connect to the network.

Dial-in Services Information

NetWare Mobile provides a phone book and a calling-card database to help you easily connect to the network. The NetWare Mobile Phone Book stores connection information about dial-in services for frequently dialed networks. It can contain corporate entries created by the network supervisor and distributed through Novell Directory Services™ (NDS), in addition to personal entries created by users. NetWare Mobile also enables you to automatically bill connection costs to a calling card. With these services, you can quickly choose information for the server location where you want to connect and select which calling card will be billed.

Powerful Management Tools

NetWare Mobile provides network supervisors with tools that let them easily support and manage mobile users. It provides a snap-in module for the NetWare Administrator utility that enables network supervisors to use NDS to preconfigure mobile file groups and dial-in access points for distribution to mobile users.

Options

You can use NetWare Mobile in combination with Novell's NetWare Connect 2™ software, a scalable, server-based remote communication platform, to provide a complete, secure remote access solution.

Hardware Requirements

Client

- 386-based PC or above
- 4MB of RAM (minimum)
- 10MB of free disk space (minimum)
- Local area network (LAN) adapter or modem, or both, for connecting to a network

Software Requirements

Client

- Windows 3.1 or above, or Windows for Workgroups 3.11
- Novell DOS™, MS-DOS 5 or above, or PC-DOS 5 or above

Server

- NetWare 3.11 NOS or above (NetWare administration support for NetWare Mobile requires NetWare 4.1 or above)
- NetWare Connect 2, Shiva LAN Rover 3.5 or above, or Generic PPP- and SLIP-compliant services on NetWare servers that support dial-in connections

Specifications

NetWare Mobile is available in single-, 5-, 25-, and 100-user versions.

Ordering Information

For more information about NetWare Mobile, contact your local Novell® office or call the Novell Customer Response Center at 1-801-228-4CRC (1-801-228-4272). Or, in the United States and Canada, call toll free 1-888-321-4CRC (1-888-321-4272). You may also visit Novell's World Wide Web site at <http://www.novell.com/products> or use Novell's Product Information FaxBack system at 1-801-861-3030. Or, in the United States and Canada, call 1-800-209-3500.

© 1997 Novell, Inc.